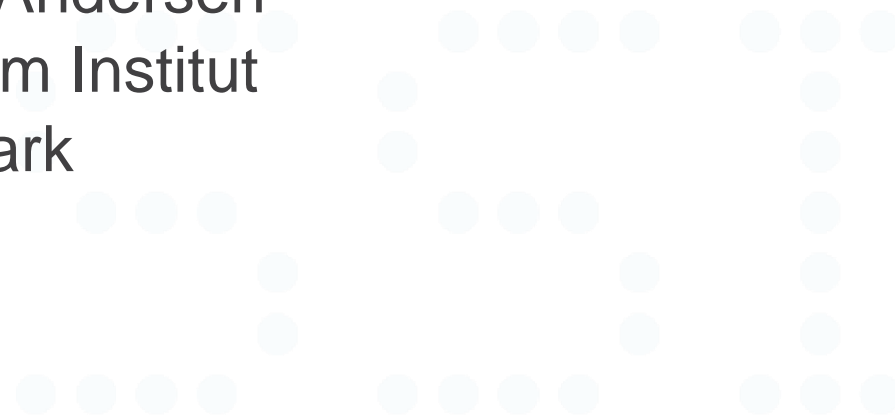




FIRST YEAR(S) EXPERIENCE OF THE MR SCANDINAVIAN VERIFICATION COMMITTEE (SVC)

Peter Henrik Andersen
Statens Serum Institut
Denmark

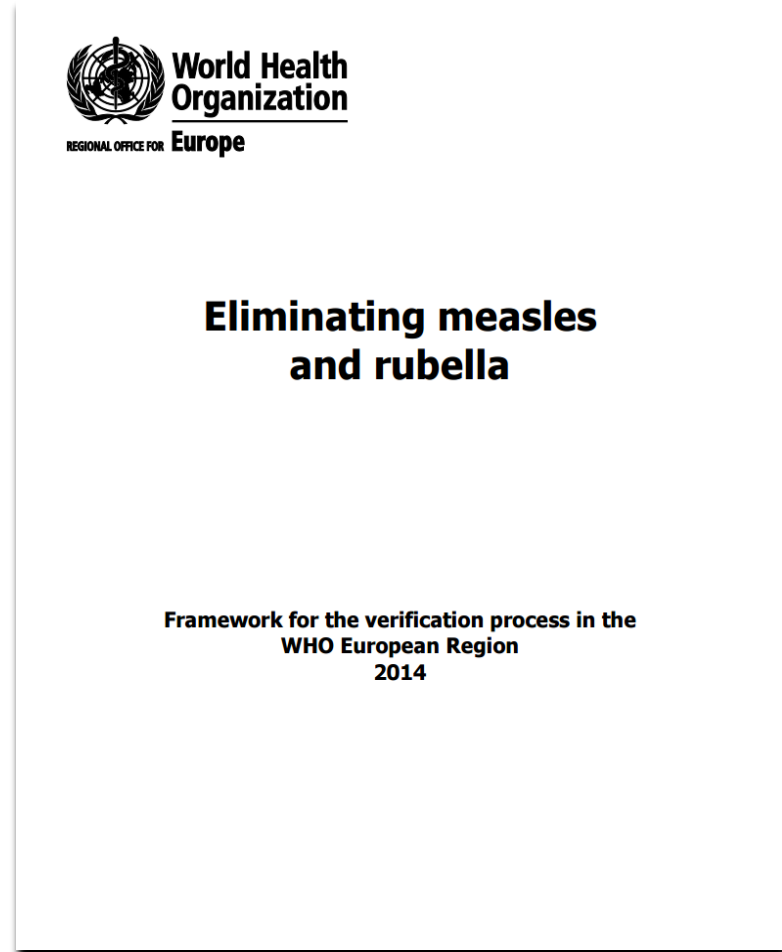
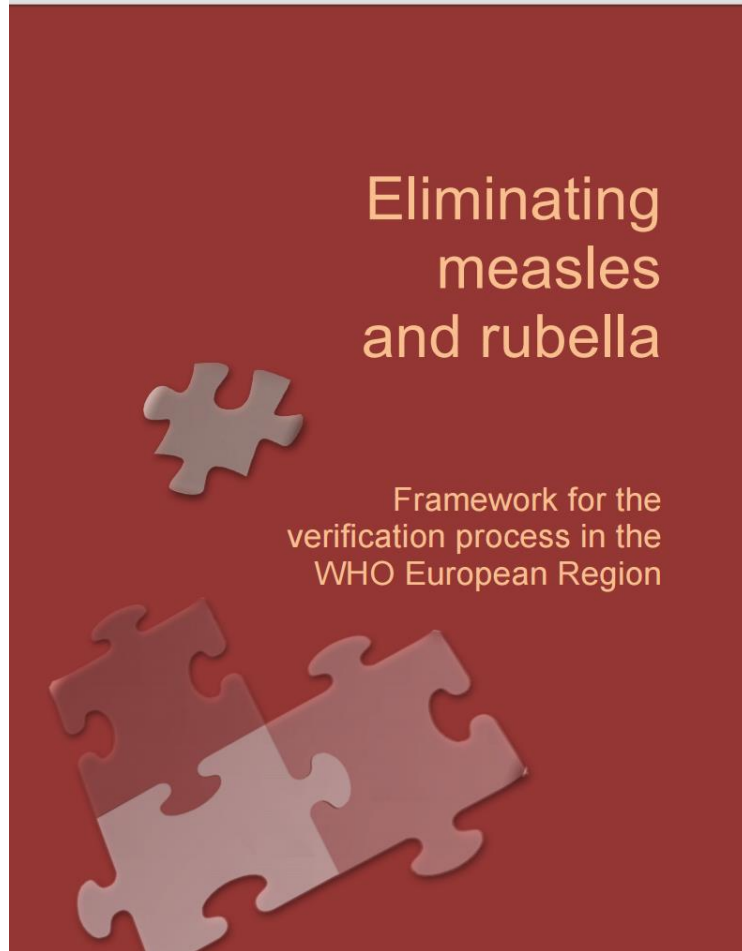


CONFLICTS OF INTEREST

❖ None



- ❖ WHO European Region target to eliminate measles and rubella by 2015
- ❖ Decision based on the evidence presented by all 53 member states
- ❖ Evaluation by National (NVC) and Regional (RVC) Verification Committee/Commission
- ❖ Measles and/or rubella either:
 - endemic
 - interrupted transmission (12-24-36 months)
 - re-established endemic transmission (circulation > 12 months)
- ❖ Interruption in one member state for 36 months defines **country elimination**
- ❖ Interruption in all 53 member states for 36 months defines **regional elimination**
- ❖ WHO has requested Annual status updates (ASU) since 2013 (2010-12, 2013, 2014, 2015)



(Replaced similar document from 2012)

- ❖ The document describes the steps to be taken **to document and verify that elimination of measles and rubella has been achieved** in the WHO European Region.
- ❖ Annual assessments per country will be based on information about **measles and rubella epidemiology, virologic surveillance supported by molecular epidemiology, analyses of vaccinated population cohorts, quality surveillance and the sustainability of the national immunization programme.**
- ❖ Review and evaluation of annual national reports will **continue in each Member State for at least three years** after the Regional Verification Commission for Measles and Rubella Elimination confirms that endemic measles and rubella transmission has been interrupted in all Member States of the Region.

MEASLES AND RUBELLA ELIMINATION 2015

PACKAGE FOR ACCELERATED ACTION: 2013-2015



The "Package for accelerated action" for measles and rubella elimination

- **identifies priority areas** in which the Regional Office will strengthen technical support to Member States as they seek to eliminate measles and rubella
- **sets indicators and milestones** by which progress resulting from the efforts of all stakeholders can be measured.

HOW THE IDEA WAS FOSTERED....

- ❖ WHO meeting in Copenhagen in January 2013 (WHO-ECDC Workshop on Measles and Rubella elimination verification process)
- ❖ Discussion on forming national verification committees (like NCC's for polio)
- ❖ The Nordic countries were put together in a work session:



- ❖ Small countries with possible lack of independent MR experts
- ❖ Independence could be achieved by having one country evaluate data from another
- ❖ It was proposed to explore the possibility of forming a joint Nordic committee
- ❖ Questions
 - ❖ Would WHO accept a "supranational" committee?
 - ❖ Which experts was needed for the committee?
 - ❖ Could the Nordic Council act as a secretariat? (And fund meetings?)

- ❖ First telemeeting held in April 2013
- ❖ For different reasons Finland and Iceland decided to form national committees
- ❖ Change of name from "Nordic" to "Scandinavian" Verification Committee
- ❖ 2010-12 update report to WHO end of July 2013 (Denmark submitted this report in August 2014)
- ❖ Second RVC meeting in autumn of 2013 reviewing 2010-12 data
- ❖ Following a telemeeting in early 2014 a working group drafted Col form, SOP and ToR
- ❖ Process of appointing SVC members began
- ❖ Further discussion at Nordic Vaccine Meeting in Norway in May 2014
- ❖ Nordic Council liked the idea but could not support for reasons of prioritization

SVC FORMED IN JUNE 2014

- ❖ Four experts from each of the three Scandinavian countries Norway, Sweden and Denmark were officially appointed by the respective public health authority
- ❖ National experts in: Public Health, Epidemiology (Vaccinology), Virology, and Clinical medicine (Infectious Diseases and Pediatrics)
- ❖ First SVC telemeeting held 3rd June 2014 (English as working language)
- ❖ ToR and SOP was approved
- ❖ Members having 3-year serving period (renomination possible)
- ❖ Members to be seriously committed to the verification process and to apply a rigorous and scientific approach to assess the evidence and present their judgements frankly and objectively
- ❖ Participation voluntary and without specific monetary compensation.
- ❖ Sweden chair for 2 years. Denmark secretary for 2 years

RESULTS OF 2013 DATA EVALUATION

- ❖ WHO template for ASU 2013 was received very late
- ❖ Deadline was moved from end July to end August 2014
- ❖ Norway inspired to structured review of data: Epidemiology (historic and current), Surveillance system, Vaccination coverage, Population Immunity, Conclusion/Rationale

- ❖ Concerning 2013 data:
 - ❖ Denmark evaluated Norway: **Measles: Interruption Rubella: Interruption** (including 2010-12 data)
 - ❖ Norway evaluated Sweden: **Measles: Interruption Rubella: Interruption**
 - ❖ Sweden evaluated Denmark: **Measles: Interruption, at risk Rubella: Interruption, at risk**
(including 2010-12 data)

- ❖ Debriefing SVC telemeeting held end august 2014
- ❖ 1. SVC meeting in Stockholm November 2014
- ❖ Lessons learned: - inappropriate to have process over the summer holiday
 - some WHO performance indicators difficult to adapt to Scandinavian setting
 - SOP made generic without calendar years

- ❖ Third meeting of the Regional Verification Commission for measles and rubella elimination (RVC), November 2014
- ❖ WHO/RVC feedback in March 2015 on 2013 data (plus 2010-12):
 - ❖ (firstly given at intercountry meeting, held in Copenhagen on 24-25 March 2015)
- ❖ Norway: **Measles and rubella: Interrupted, risk of re-establishment** (suboptimal immunity in 6 subnational admin. areas)
- ❖ Sweden: **Measles: Interrupted Rubella: Inconclusive** (surveillance quality)
- ❖ Denmark: **Measles and rubella: Inconclusive** (lack of notification of all suspected M cases, no surveillance of R among whole population)
- ❖ RVC evaluation differed from SVC evaluation. Need to address this?
- ❖ In 2015 SVC decided to advance data procurement and evaluation to period before summer holiday
- ❖ Telemeetings held in May and June 2015
- ❖ A joint server space was set up (OwnCloud)
- ❖ All ASU's forwarded to WHO before summer holiday



- ❖ Concerning 2014 ASU:
 - ❖ Denmark evaluated Sweden: **Measles** and **rubella: interrupted** (as 2013)
 - ❖ Norway evaluated Denmark: **Measles: interrupted, at risk** (as 2013)
Rubella: inconclusive (different than 2013)
 - ❖ Sweden evaluated Norway: **Measles** and **rubella: interrupted** (as 2013)
-
- ❖ 2. SVC meeting in Copenhagen November 2015
 - ❖ Participation from WHO and RVC (observers)
 - ❖ Supportive of work of SVC
 - ❖ Denmark chair next 2 years
 - ❖ Norway secretary next 2 years
 - ❖ It was proposed to join SVC with NCC's for polio (not yet settled)

- ❖ WHO/RVC feedback in March 2016 (based on 2012-2014 data):
 - ❖ Norway: **Measles: Eliminated** **Rubella: Eliminated**
 - ❖ Sweden: **Measles: Eliminated** **Rubella: Interrupted transmission 12 months**
 - ❖ Denmark: **Measles: Interrupted transmission 12 months**
Rubella: Endemic! (due to inadequate vaccination coverage and absence of routine rubella surveillance)
- ❖ RVC decided to abolish "interrupted, at risk" and "inconclusive"
- ❖ In Denmark this was covered by the media, main focus on not reaching the 95% vaccination target, overseeing that for measles interruption was reached and that rubella was considered endemic! (Nationwide data on rubella testing available through "Laboratoriedatabanken". Will be included in 2015 ASU, including retrospective data)
- ❖ In Norway there was some media attention in 2015 but not so far in 2016
- ❖ No media attention in Sweden

- ❖ Will be collected and evaluated in May/June 2016 (using OwnCloud platform. Upload to WHO Sharepoint)
- ❖ Telemeeting scheduled for 16 June

- ❖ Concerning 2015 data Denmark will evaluate Norway
Sweden will evaluate Denmark
Norway will evaluate Sweden

- ❖ Denmark expected to reach 24 months interruption of measles transmission
Retrospective interruption/elimination of rubella?

- ❖ Sweden expected to reach 24 months interruption of rubella
(and maintain elimination of measles)

- ❖ Norway expected to maintain elimination of measles and rubella

- ❖ We will know for sure in 2017.....

❖ Measles:

- ❖ 21 countries had eliminated measles (**Finland, Norway, Sweden**)
- ❖ 2 countries interrupted transmission of endemic measles in 2013-14
- ❖ 9 countries interrupted transmission of endemic measles in 2014 (**Iceland, Denmark**)
- ❖ 18 countries remained endemic

❖ Rubella:

- ❖ 20 countries had eliminated rubella (**Finland, Norway**)
- ❖ 3 countries interrupted transmission of endemic rubella in 2013-14
- ❖ 8 countries interrupted transmission of endemic rubella in 2014 (**Iceland, Sweden**)
- ❖ 18 countries remained endemic (**Denmark**)
- ❖ 3 countries did start the verification process
- ❖ Europe has still some way to go.....

THANK YOU FOR YOUR ATTENTION

